

JINJIFENG GEARBOX
THE BEST CHOICE FOR TWIN-SCREW EXTRUSION EQUIPMENT

双轴膨化机的最佳选择 金稷丰齿轮箱

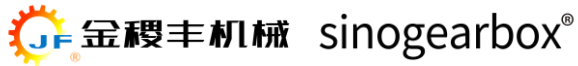
- 丰富的标准机型
- 定制化设计服务
- 维修服务
- 升级改造服务



微信公众号

公司简介 COMPANY PROFILE

成都金稷丰机械制造有限公司，是一家专注于双螺杆专用中高端齿轮箱研发、设计、制造、维修、替换和升级改造，且具备大量成功案例的专业服务商。



我们拥有技术设计、生产加工、装配制造、售后服务等一批专业队伍，提供齿轮箱研发、设计、制造、维修、替换和升级改造的一站式解决方案，通过最快速的响应、最短的周期和最高的性价比，急客户所急，为客户创造最大的价值。自2002从事该业务以来，客户反响良好，部分齿轮箱使用时间已超过20年仍能正常运行。凭借着“高扭矩、高效率、高寿命”的优点，我们的产品得到越来越多客户的青睐，目前已广泛应用于橡塑、石化、片板膜直接挤出、复合材料、制药、粉末涂料、无纺布等领域。

“技术先行，工匠立企”

金稷丰始终如一地坚守着“技术先行，工匠立企”的企业理念，持续推行“以技术研发为核心，以工匠传承为基石”的发展思路，致力为用户提供高效稳定、品质卓越的核心设备和贴心的服务。

Chengdu Jinjifeng Machinery Manufacturing Co., Ltd. is a professional service provider focusing on the research and development, design, manufacture, maintenance, replacement and upgrading of middle and high-end gear-boxes for twin-screw equipment, and has a large number of successful cases.

We have a professional team in technical design, processing, assembly, manufacturing, and after-sales service, providing one-stop solutions for gearbox R&D, design, manufacturing, maintenance, replacement, and upgrading. Through the fastest response, the shortest cycle and the highest cost performance, we are eager to meet the needs of customers and create the greatest value for customers. Since it was established in 2002, the customer evaluation is very good. Some gearboxes have been used for more than 20 years and are still in normal operation. With the advantages of "high torque, high efficiency and long service life", our products have been favored by more and more customers, and have been widely used in rubber and plastics, petrochemical, sheet film direct extrusion, composite materials, pharmaceuticals, powder Coatings, non-woven fabrics and other fields.

Jinjifeng has always adhered to the enterprise concept of "technology first, craftsman based enterprise", continued to implement the development idea of "technology research and development as the core, craftsman inheritance as the cornerstone", and is committed to providing customers with efficient, stable, high-quality equipment and thoughtful services.



QUALIFICATION HONOR 资质荣誉

我们是国家高新技术企业、中国塑料机械协会会员单位、四川省创新型中小企业、四川省科技型中小企业，拥有商标及各类专利20余项。

We are a national high-tech enterprise, a member unit of China Plastics Machinery Association, an innovative small & medium-sized enterprise in Sichuan Province, and a scientific & technological small & medium-sized enterprise in Sichuan Province. We have more than 20 trademarks and various patents.



优势及实力 ADVANTAGES & STRENGTH

30+年的行业积淀，全方位的专业团队

自十九世纪八十年代，公司创始人基于塑料挤出机的制造经验和国内外塑料挤出机的应用经验，敏锐地发现了双螺杆挤出机在动力传递和扭力分配的核心技术瓶颈，并开始着力突破这一核心技术——即双螺杆齿轮箱的承载能力、耐用性和稳定性。

始终秉承着创始人的理念，1993年我公司正式开始设计并制造双侧对称驱动齿轮箱，经过三十余年的实践，我们形成了具备自主知识产权的稳定高效、持久耐用的齿轮箱产品，并组建了包含技术设计、生产加工、装配制造、售后服务等在内的一批专业队伍，积淀了丰富的行业经验。



A professional team with more than 30 years of industry accumulation

Since the 1980s, based on the manufacturing experience of plastic extruders and the application experience of plastic extruders at home and abroad, the founder of the company has keenly discovered the core technology bottleneck of twin-screw extruder in power transmission and torque distribution, and has begun to make efforts to break through this core technology - the bearing capacity, durability and stability of twin-screw gearbox.

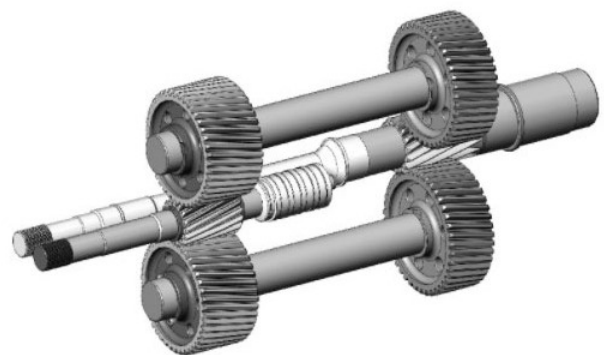
Always adhering to the founder's philosophy, our company officially began to design and manufacture double-sided symmetrical drive gearboxes in 1993. After more than 30 years of practice, we have formed stable, efficient, and durable gearbox products with independent intellectual property rights. We have formed a professional team with rich industry experience including technical design, processing, assembly, manufacturing, and after-sales service.

Gear transmission technology reaching international advanced level

The gearbox of our company adopts the improved "double-side gear symmetrical drive" transmission technology with international advanced level, which greatly improves the output capacity and output torque of the output shaft, and greatly reduces the force on the output shaft bearing, thus greatly prolonging the service life of the gearbox. It has been proved that our company's technical performance is perfect, and the gear boxes produced by our company are sold all over the world, with an operating life of more than 10 years.

达到国际先进水平的齿轮传动技术

我公司的齿轮箱使用了具有国际先进水平的“双侧齿轮对称驱动”传动技术并进行了改良，该技术使输出轴的输出能力和输出扭矩大幅提高，同时极大降低输出轴轴承的受力，从而极大延长了齿轮箱的使用寿命。实践证明，我公司的这一技术表现完美，运行寿命达到10年以上的齿轮箱遍布世界各地。



品质卓越，稳定可靠，性能优越

除了注重技术设计，我们也高度重视材料选择、齿轮加工和装配等重要环节，致力为客户提供品质卓越、稳定可靠的高转速、高扭矩、高性能齿轮箱。

材料选择上，我们统一选用高强度耐磨材料，以及国际公认、品质一流的瑞典SKF和德国INA轴承；在齿轮加工和装配上，我们专门组建了一支加工和装配队伍，搭配进口高精度精密机床，凭借丰富的实践经验和精准的装配技术，齿轮级精度6级以上，输出扭矩达到国外著名厂家同等水平。



Excellent quality, stability and reliability, superior performance

In addition to technical design, we also attach great importance to important links such as material selection, gear processing and assembly. We are committed to providing customers with high-speed, high-torque, high-performance gearboxes of excellent quality, stability and reliability.

In terms of materials, we use high-strength wear-resistant materials, as well as Swedish SKF and German INA bearings which are internationally recognized, top-quality. For gear processing and assembly, we have a professional processing and assembly team and imported high-precision machine tools. With rich practical experience and excellent assembly technology, the gear precision is above grade 6, and the output torque has reached the same level as that of famous foreign manufacturers.

rapid response, short cycle, high cost performance

Our company has a 7×24 after-sales service team, including a number of after-sales experts who have worked in imported gearbox companies, with an average industry experience of more than 5 years. With a strong after-sales team, rich experience and superb technology, as well as the geographical and cost advantages of domestic enterprises, we can provide you with professional and caring services with faster response, shorter cycle and higher cost performance.

响应快速，周期短，性价比高

我公司专门组建有7×24小时的售后服务团队，包含多名曾有进口齿轮箱企业工作经验的售后专家，团队人均行业经验5年+，凭借着强大的售后团队、丰富的经验和精湛的技术，以及国内企业的地理和成本优势，可为您提供响应更快、周期更短、性价比更高的专业贴心服务。



以塑机标准重定义膨化机齿轮箱

MANUFACTURE EXTRUDER GEARBOX ACCORDING TO PLASTIC MACHINE STANDARD

我们始终以塑机标准进行严格要求，贯穿产品的技术设计、生产加工、装配制造等环节，致力为客户提供品质卓越、稳定可靠的高性能膨化机齿轮箱。

我们对膨化机齿轮箱进行了针对性的设计优化，以应对生产现场的各种环境，及常有的瞬时高扭、振动等情况，确保膨化设备的长久耐用，减少停机造成的经济损失。

We always carry out strict requirements according to the standards of plastic machines, throughout the technical design, processing, manufacturing, assembly and other links, and are committed to providing customers with gearbox with excellent quality, stability and reliability, superior performance.

We have carried out targeted optimization on the gearbox to deal with various environments on the production site, as well as the common transient high torque, vibration and other conditions, so as to ensure the long-term durability of the extrusion equipment and reduce the economic losses caused by shutdown.

高标准带来更高的品质

- 我们的技术设计团队拥有丰富的塑机、膨化机行业经验和技术沉淀，齿轮箱设计自带“先天优势”。
- 关键部件选用优质材料：齿轮选用性能稳定的20CrMnTi等优质合金钢材料，轴承选用德国INA、FAG等国际一线品牌，油封选用CFW等品牌。
- 强大的加工和装配能力：我们有一支专业的加工和装配队伍，搭配进口高精度精密机床，凭借丰富的实践经验和精准的装配技术，齿轮级精度6级以上，输出扭矩达到国外著名厂家同等水平。

High standards bring higher quality

- Our technical design team has rich experience and technical accumulation in the plastic machine and extruder industry, and has "innate advantages" in gearbox design.
- The key components are made of high-quality materials: the gears are made of high-quality alloy steel materials such as 20CrMnTi with stable performance, the bearings adopt international first-line brands such as INA and FAG in Germany, and the oil seals adopt CFW brands.
- Strong processing and assembly capabilities: we have a professional processing and assembly team and imported high-precision machine tools. With rich practical experience and excellent assembly technology, the gear precision is above grade 6, and the output torque has reached the same level as that of famous foreign manufacturers.



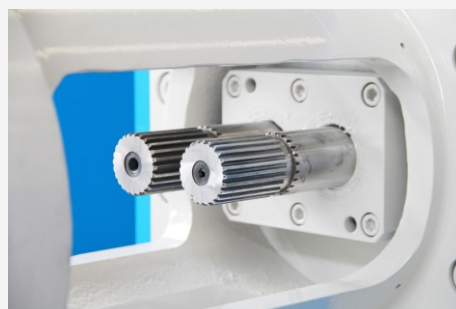


专项优化让您的设备经久耐用

- 选用优质轴承，特别是推力轴承，选用进口品牌，且型号更大，承载能力更强。
- 油路散热设计更富余，确保恶劣环境下油温正常，进而确保齿轮箱运行稳定。
- 填料部分相关件进行了特殊的表面处理或加入不锈钢等措施，提高填料部分的密封性和耐腐蚀能力。

Special optimization makes your equipment durable

- High-quality bearings, especially thrust bearings, are imported brands with larger models and stronger bearing capacity.
- The oil cooling design is more abundant to ensure that the oil temperature is normal under harsh conditions, thus ensuring the stable operation of the gear box.
- Special surface treatment or addition of stainless steel and other measures have been taken to improve the sealing and corrosion resistance of the packing parts.



主导产品系列 LEADING PRODUCT SERIES

我们在膨化机齿轮箱行业深耕多年，与行业多家知名膨化机主机厂均有合作，公司齿轮箱型号覆盖面广，且还在不断开发新型号。

We have been deeply engaged in the extruder gearbox industry for many years, and have cooperated with many well-known extruder factories. Our company has a wide range of gearbox models and is still developing new models.

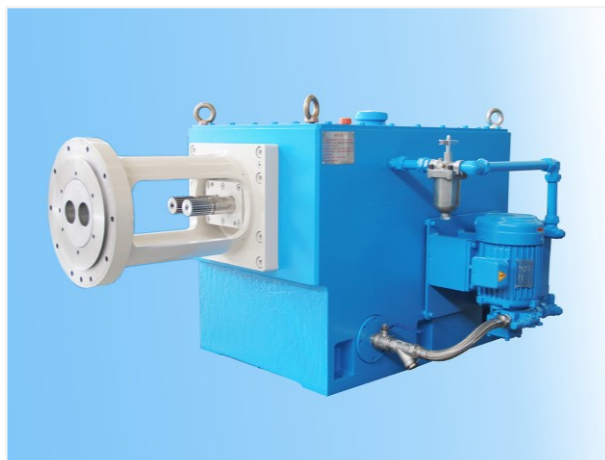
主导机型参数一览表 List of leading model parameters

型号 Model	中心距/mm Center distance	螺杆直径/mm Screw diameter	功率/kw Motor power	输出转速/rpm Max. output speed
72机	72	90	132~160	500
75机	75	94	160~200	600
78机	78	98	160~250	750
81机	81	101	160~250	600
95机	95	120	200~280	500
102机	102	125	200~315	600
106机	106	130	200~315	600
110机	110	135	250~355	600
120机	120	150	315~400	600
125机	125	155	315~450	700
141机	141	175	560~630	600
144机	144	180	560~630	550

部分机型实拍图 Pictures of some gearboxes



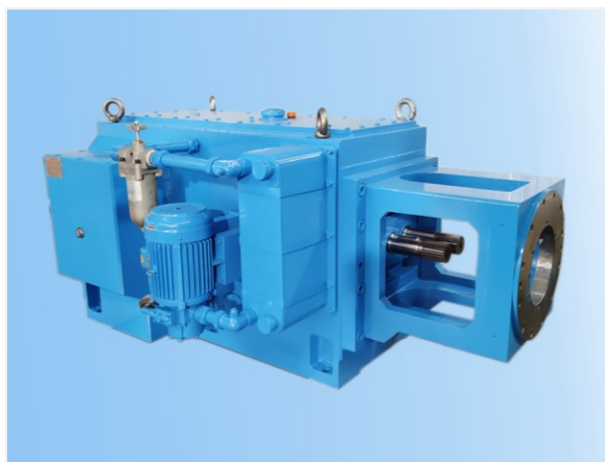
72齿轮箱 / 72 gearbox



75齿轮箱 / 75gearbox



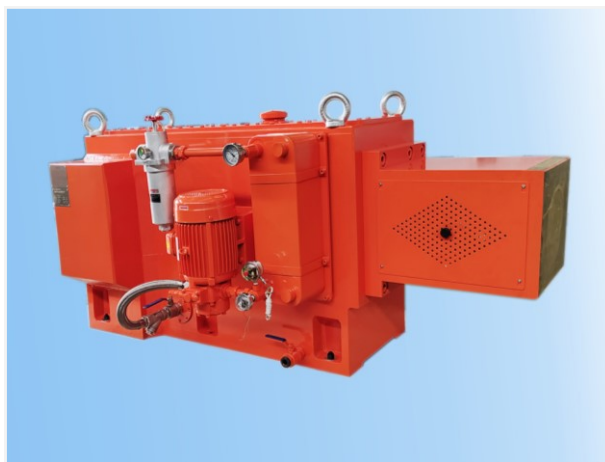
95齿轮箱 / 95 gearbox



106齿轮箱 / 106 gearbox



120齿轮箱 / 120 gearbox



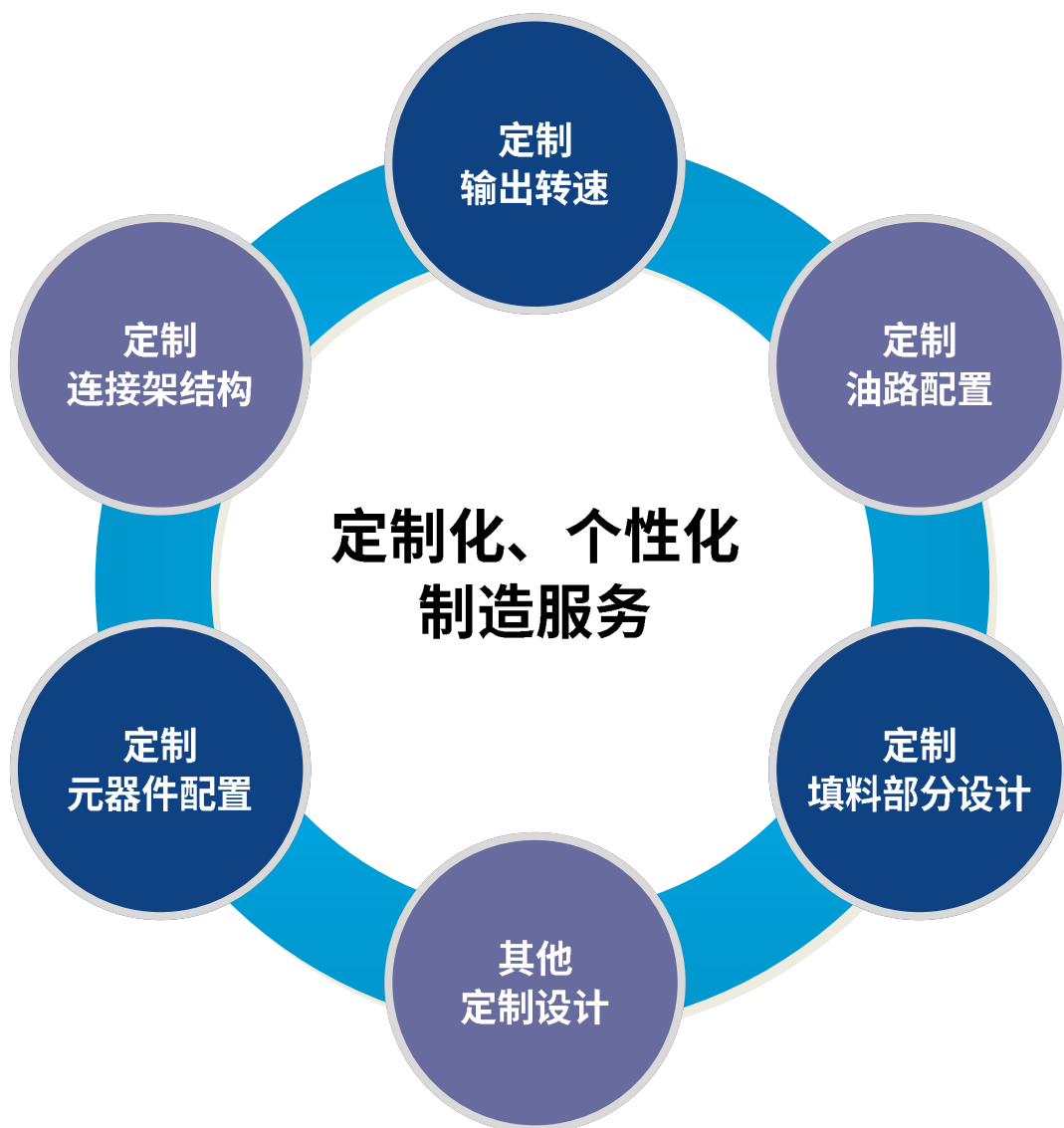
125齿轮箱 / 125 gearbox

定制化个性化制造服务

PERSONALIZED CUSTOMIZED SERVICE

根据您的个性需求和实际情况，我们提供定制化制造服务，包括齿轮箱输出转速、连接架结构方式、油路配置、相关元器件配置、填料部分设计等均可按客户定制要求制作。

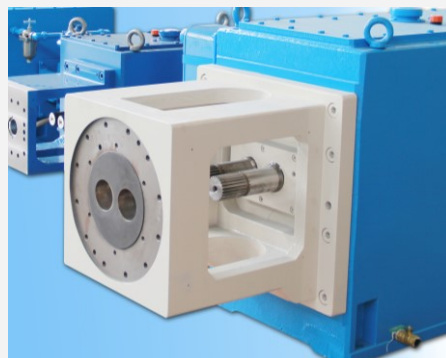
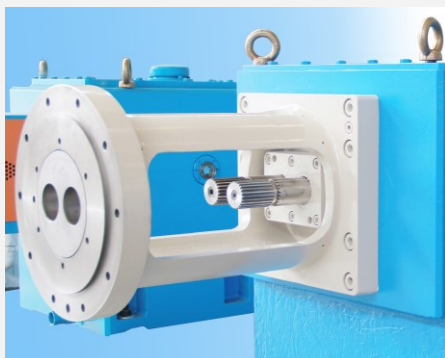
According to your individual needs and actual situation, we provide customized services, including the output speed of the gearbox, the structure of the connecting frame, the configuration of the oil circuit, the configuration of related components, and the design of the packing part, etc.





个性定制

想即所得



升级改造服务 UPGRADING SERVICE

凭借我公司30+年的行业积淀和大量成功案例，以及强大的技术团队、精湛的制造装配能力和专业的售后服务，我公司可为您提供一对一的升级改造服务，根据您的要求和实际情况量身定制专业的升级改造方案，提高设备稳定性、提升扭矩、降低比能耗、增大产能。

With more than 30 years of industry accumulation and a large number of successful cases, superb manufacturing and assembly capabilities, as well as a strong technical team and after-sales service team, our company can provide you with one-to-one upgrading services. According to your requirements and actual conditions, we can customize professional upgrading plans to help you improve equipment stability, improve torque, reduce specific energy consumption and increase production capacity.

升级改造



提高稳定性



增强扭矩



降低比能耗



增大产能



UPGRADE CASES 升级改造案例

国内某饲料公司生产线升级改造案例

根据客户实际情况和特殊需求，我公司将客户原有的平行三轴120齿轮箱升级更换为对称结构120齿轮箱，在参数不变的情况下，释放更高功率，生产产能得到很大提高。同时，齿轮箱稳定性增加，维护成本降低。

According to the customer's actual situation and special needs, our company upgraded the customer's original parallel three-axis 120 gearbox to a symmetrical structure 120 gearbox, which releases higher power and greatly improves the production capacity without changing the parameters. At the same time, the stability of the gearbox is increased and the maintenance cost is reduced.



国内某饲料公司齿轮箱升级改造案例

根据客户现场主机的实际情况，我公司技术团队量身定制升级改造方案，新齿轮箱在输出转速不变的情况下，适配电机功率增加90%，扭矩随之增加，理论产量指标提升50%以上。

According to the actual situation of the customer's extruder, our technical team customized the upgrading plan. After upgrading, with the output speed unchanged, the power of the adaptive motor will increase by 90%, and the torque will increase accordingly, and the output capacity will theoretically increase by more than 50%.



我们的服务 OUR SERVICE

我们致力于为客户提供最优质、最全面的服务。我们不仅关注客户的需求,而且积极邀请客户参与,同客户价值共享,与客户共同成长。

整个产品销售过程中,我们提供售前支持和售后服务,并始终以“提高服务效率、提升服务水平、降低维护成本”的全生命周期客户服务为导向,开创全新服务时代。

We are committed to providing customers with the highest quality and most comprehensive services. We not only pay attention to the needs of customers, but also actively invite customers to participate, share value with customers, and grow together with customers.

We provide pre-sales support and after-sales service, and always take "improving service efficiency, improving service level, and reducing maintenance cost" as the guide for the whole life cycle customer service, creating a new era of service.

服务内容

- **备件服务:** 我们能快速可靠地提供生产阶段所需易损件和备件,确保您的生产不会停滞。
- **维护改进:** 我们会助您一臂之力,精心对设备维护保养,及时发现薄弱环节,以降低您的修理成本。
- **紧急服务:** 无论是设备停机,还是突然故障,您可以随时随地联系我们,我们将以最快速度提供紧急服务。
- **技术支持:** 我们有专业强大的技术支持团队,向客户提供广泛的顾问式技术服务,并研究处理各种特殊状况。
- **Spare parts service:** We can provide quick-wear parts and spare parts needed in the production stage quickly and reliably to ensure that your production will not stop.
- **Maintenance and improvement:** We will help you to maintain the equipment carefully and find the weak links in time to reduce your repair costs.
- **Emergency service:** Whether it is equipment downtime or sudden failure, you can contact us anytime and anywhere, and we will provide emergency services as quickly as possible.
- **Technical support:** We have a professional technical team to provide customers with a wide range of advisory technical services and handle various special situations.



LONG-TERM PARTNER 长期合作单位



瑞典斯凯孚



德国INA



德国FAG



德国西门子公司



德国CFW



德国SEW



瑞士ABB集团



德国UKS



中国石化



中国石油



沙伯基础塑料



台塑集团



云天化集团



海尔集团



金发科技



广东彩艳集团



新希望集团



中国科学院化学研究所



郑州机械研究所



江苏丰尚



布勒集团



广东申川

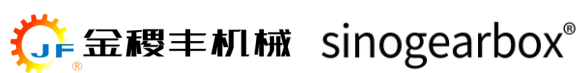


广州天地实业



牧羊集团

技术先行 工匠立企



成都金稷丰机械制造有限公司

CHENGDU JINJIFENG MACHINERY MANUFACTURING CO., LTD

咨询热线 Tel: +86-18583903320; +86-28-85869172

电子邮箱 E-mail: heshiquan@sinogearbox.com; 313882087@qq.com

公司官网 Web: www.sinogearbox.com

公司地址: 四川省成都市都江堰市四川都江堰经济开发区金藤大道4号

Address: NO. 4, Jinteng Road, Dujiangyan Economic Development Zone, Sichuan



微信公众号



公司官网



专属客服



投诉建议